



The home of seminars
'Châteauform'

Schloss Ahrenthal
Burg Hemmersbach
Schloss Krickenbeck
Schloss Löwenstein
Schloss Reinhartshausen
Schloss Rothenbuch

Conference, Meetings, Trainings

6 houses to meet all
your requirements

Here, you are at home...

6 houses to meet all your requirements.
Here, you are at home...



The ingredients for your success

- A friendly welcome from the hosts with all simplicity
- A chef and his home cooking
- Your pace is ours, as you wish
- Ideally located, easy access...
- Quiet places, beautiful settings
- Everything you need to relax
- Everything is on site, close at hand...
- High-touch décor, high-tech technology
- A “nanny” to help with your arrangements
- Absolutely everything is included, with no worries...



Your « all inclusive » package ... and with peace of mind

Your Meeting:

- Main meeting room
- Syndicate rooms
- LCD projector
- Interactive multi-touch boards
- Whiteboards and flipcharts
- Metaplan board and case
- Video conferencing facilities
- Multi-language computer in each meeting room
- PA system and microphone
- “Business corners” with PC, printer, photocopier and scanner
- Complimentary Wi-Fi
- Phone calls
- ... and a technical assistance for the AV equipment...

Your Stay:

- Daytime, evening and overnight stay
- Your 3 meals: breakfast, lunch and dinner
- Wine and minerals water
- Your morning and afternoon breaks
- Unlimited refreshments, tea, coffee, hot chocolate
- Aperitifs and liqueurs
- Open bar
- ...

Your leisure:

- Access to all leisure activities of the house
- Mountain bikes
- Tennis (in some houses)
- Multi-sports pitch: football, volley-ball, rugby...
- Table tennis
- Archery
- Hammam, sauna, jacuzzi, hydro-massaging beds...
- Gym
- Golf practice
- Swimming pool (in some houses)
- Pool table, Football table, board games, card games, darts, Karaoke, Video Games

Schloss Ahrenthal

near Cologne/Bonn



The home of seminars
Châteauform'

Schloss Ahrenthal

A country house in the middle of the Rhineland woods

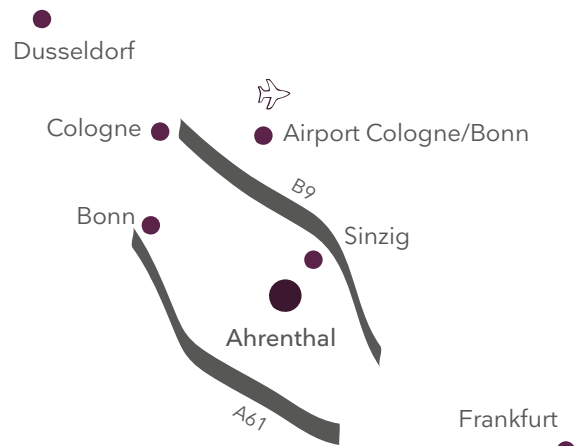
Schloss Ahrenthal stands close to the banks of the Rhine, between Cologne and Frankfurt, 40 minutes from Cologne-Bonn International airport. It welcomes your teams among woods and vineyards, in the quiet of a comfortably-sized, convivial country house, where the high-tech of the meeting rooms blends harmoniously with a decor typical of the beautiful Rhine Valley residences... The surrounding countryside is heavily forested and extremely peaceful – the natural setting inspires thoughts and is perfect for successful meetings.

Your House:

- 64 bedrooms
- 15 fully-equipped meeting rooms for 4 to 100 participants, including 6 main meeting rooms and 9 breakout rooms

Fun and entertainment activities:

- Mountain bikes
- Volleyball
- Football
- Badminton
- Petanque
- Table tennis
- Football table
- Archery
- Sauna and hydro-massaging beds
- Fitness
- Pool table,
- Board games, card games, darts, video games
- Karaoke



Schloss Ahrenthal

D - 53489 Sinzig

40 minutes from Cologne/Bonn Airport
90 minutes from Frankfurt and Dusseldorf airport
45 minutes from Cologne train station
30 minutes from Bonn train station

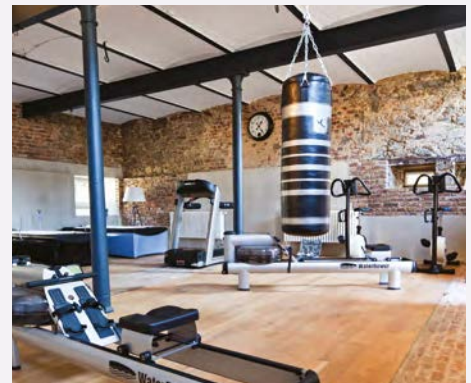
Your all-inclusive package:

Low season: 285 € / High season: 315 € (excl. VAT) *

* Dear customers, all-inclusive residential packages are in euros and duty-free by participant (2017 prices). All prices are subject to change, so please contact us to get more information.

“ We had a wonderful seminar at Schloss Ahrenthal and every employee enjoyed their stay. The host couple took charmingly care of us and it will sure not be the last time at Schloss Ahrenthal. ”

Tilly, Christina Knoll



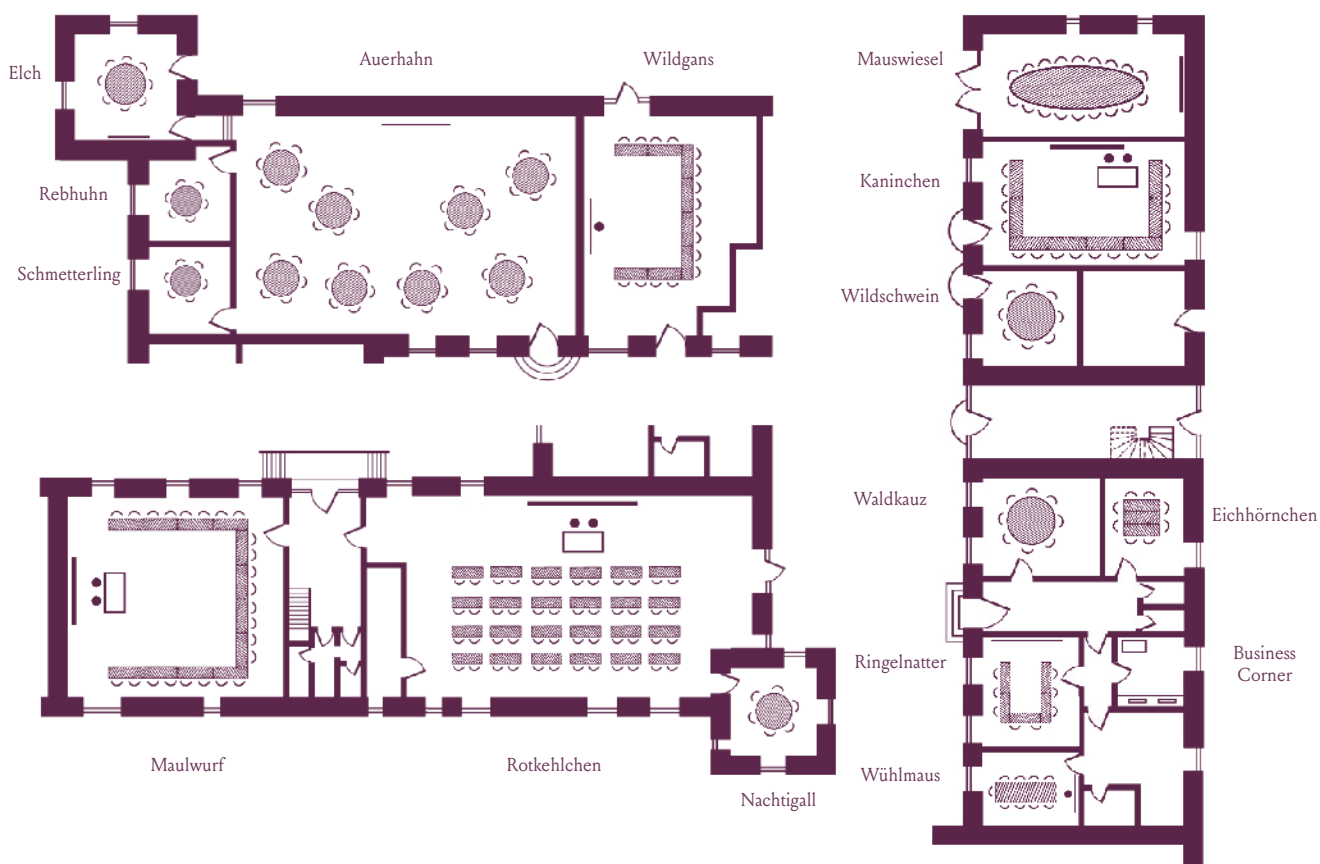
After having travelled the world from Australia and Morocco to France, we are delighted to welcome you at our home Schloss Ahrenthal. Nestled in a picturesque wooded landscape between the river Rhine and the Ahr valley, far from the daily hustle and bustle, you will find a peaceful refuge where you can breathe deeply and find time for the truly important things. Our team attends to your every need in a harmonious and homely atmosphere.

Joeke & Johan, your host couple

Your 15 meeting rooms

Room layouts adapted to your specific meeting requirements

Meeting rooms	sqm	U Shape	Theatre	Cabaret	Classroom
Rotkehlchen	131	28	48	48	90
Auerhahn	112	32	56	60	100
Maulwurf	81	24	32	32	70
Kaninchen	47	16	18	20	20
Wildgans	45	12	12	20	30
Ringelnatter	22	8	10	10	12
Mauswiesel (fixed table)	38	-	-	-	-
Elch (fixed table)	20	-	-	-	-
Waldkauz (fixed table)	20	-	-	-	-
Wildschwein (fixed table)	17	-	-	-	-
Eichhörnchen (fixed table)	15	-	-	-	-
Nachtigall (fixed table)	14	-	-	-	-
Wühlmaus (fixed table)	14	-	-	-	-
Rebhuhn (fixed table)	12	-	-	-	-
Schmetterling (fixed table)	11	-	-	-	-



Burg Hemmersbach

near Cologne



The home of seminars
Châteauform'

Burg Hemmersbach

Between town and countryside, to suit all your requirements

45 minutes from Düsseldorf Airport and on the outskirts of Cologne, the Burg is a traditional house between town and countryside. Peace and quiet reign supreme, with statues embellishing the wooded grounds. There is a wide variety of meeting rooms to suit various purposes: big plenary rooms to present your future strategies to your large teams, or subcommittee rooms for your training seminars. The proximity to Cologne also makes it feasible to host your study days and smaller meetings.

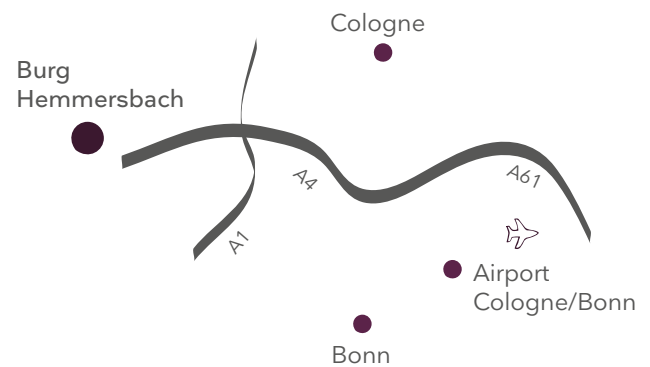


Your house:

- 100 bedrooms
- 22 fully-equipped meeting rooms for 6 to participants 150 participants, including 1 Auditorium up to 95 participants

Fun and entertainment activities:

- Mountain bikes
- Volleyball
- Football
- Badminton
- Tennis
- Petanque
- Table tennis
- Football table
- Archery
- Hammam, sauna and hydro-massaging beds
- Fitness
- Pool table,
- Board games, card games, darts, video games
- Karaoke



Burg Hemmersbach

Parkstraße 22
D-50169 Kerpen

30 minutes from Cologne/Bonn Airport
30 minutes from Cologne train station
50 minutes from Dusseldorf train station
50 minutes from Dusseldorf Airport

Your all-inclusive package:

325 € (excl. VAT)*

**Dear customers, all-inclusive residential packages are in euros and duty-free by participant (2017 prices). All prices are subject to change, so please contact us to get more information.*

“We were very satisfied! I guess I can speak in the names of our team, our participants and the faculty on site if I say that we were very good supported and made a great experience with Châteauforn’. The castle itself is a beautiful place, but beautiful places usually don’t guarantee to be good working places. What we found here was more than that. It was a Setting, which gave us the room to reflect intensively and which supported the aims of our intensive networking at its best. We were excellently taken care of on site.”

Deutsche Post DHL, Stefanie Stuhlsatz



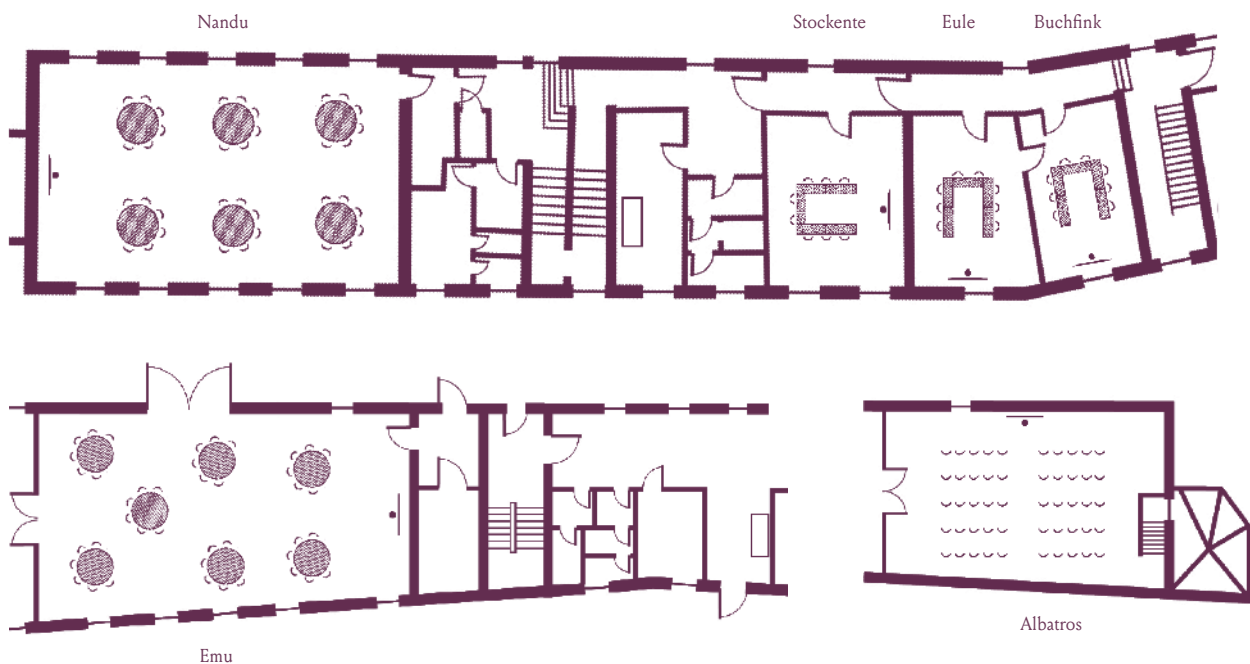
After having spent two amazing years of welcoming guests in Château de Nointel, close to Paris, we are delighted to meet you soon at Burg Hemmersbach. Our peaceful new house is embedded in nature but perfectly located with only 30 minutes away from Cologne. We are excited to show you it's forest and creek. Bringing in our Alsatian roots, we are very much looking forward to connect both, the German and French culture.

Laure & Clément, your host couple

Your 15 meeting rooms

Room layouts adapted to your specific meeting requirements

Meeting rooms	sqm	U Shape	Theatre	Cabaret	Classroom
Strauß	250	70	90	100	150
Auditorium Kasuar	200	-	-	95	-
Emu	126	30	42	50	80
Nandu	110	30	36	40	50
Albatros	100	30	36	40	50
Pelikan	95	20	30	40	60
Adler	70	20	28	30	45
Storch (fixed table)	58	16	-	-	-
Kleiber (fixed table)	56	16	-	-	20
Schwan	35	10	-	-	25
Stockente	35	8	-	-	20
Eule (fixed table)	30	8	-	-	-
Wellensittich (Informal room)	30	8	-	-	20
Buchfink	25	6	-	-	15
Blaumeise	25	6	-	-	15
Spatz	25	6	-	-	15
Rotkehlchen	22	6	-	-	14
Amsel	22	6	-	-	14
Kolibri	20	6	-	-	14
Papagei (Informal room)	46	12	16	20	30
Kanarienvogel (Informal room)	25	6	-	-	15
Schwalbe (Informal room)	23	6	-	-	15



Schloss Krickenbeck near Düsseldorf



The home of seminars
Châteauform'

Schloss Krickenbeck

For large teams “in the countryside” just outside Düsseldorf

Nestled in a nature reserve, surrounded by four superb lakes in the centre of North Rhine-Westphalia, you will feel right at home in your seminar house at Schloss Krickenbeck, a setting that offers a blend of history, friendliness and calm. With its 160 bedrooms and 28 meeting rooms, this 13th- century building can host your meetings, seminars and training sessions. Wake up gently to birdsong, while Karin and her team prepare delicious dishes for your day. The atmosphere of the world nature reserve echoes throughout the building and onto your table... prepare to be surprised and captivated.

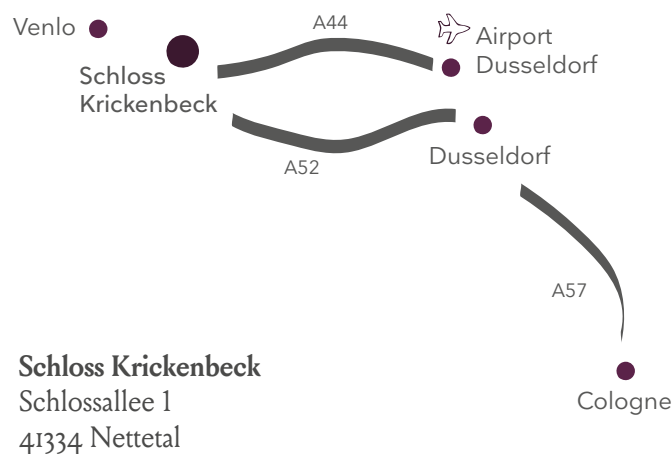


Your house:

- 160 bedrooms
- 28 fully-equipped meeting rooms for 10 to 200 participants, including breakout rooms and 3 main meeting rooms for your big events

Fun and entertainment activities:

- Mountain bikes
- Volleyball
- Football
- Badminton
- Petanque
- Table tennis
- Football table
- Archery
- Hammam, sauna and hydro-massaging beds
- Fitness
- Pool table,
- Board games, card games, darts, video games, Poker
- Bowling
- Karaoke



40 minutes from Düsseldorf Airport
60 minutes from Cologne/Bonn Airport
45 minutes from Düsseldorf train station
60 minutes from Cologne train station

Your all-inclusive package:

Low season: **295 €** / High season: **325 €** (excl. VAT) *

** Dear customers, all-inclusive residential packages are in euros and duty-free by participant (2017 prices). All prices are subject to change, so please contact us to get more information.*

“Everyone was very, very satisfied. The rooms were nice, the food was excellent and of course the nice location where you could also go outside. Our participants were completely satisfied!!! We will come back to your house with pleasure. I would like to thank you especially for the smooth and problemfree organisation (also with last minute changes). Thank you very much for the collaboration..”

Heidi Roick, Daimler-AG



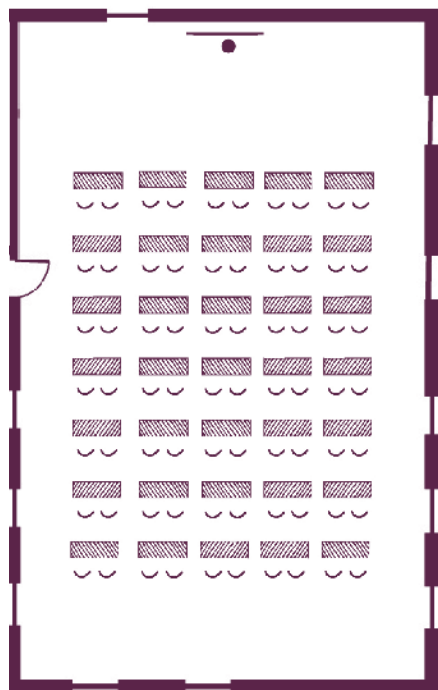
It will be a great pleasure to see you soon in Germany! Since the opening of Schloss Ahrenthal in 2011, our first German house, we have made a few stops along the way - the Abbaye de la Ramée in Belgium, Rio Parc Monceau in Paris and the Manoir in France - to now welcome you to the unique atmosphere of Schloss Krickenbeck in North Rhine-Westphalia.

Karen & Benoit, your host couple

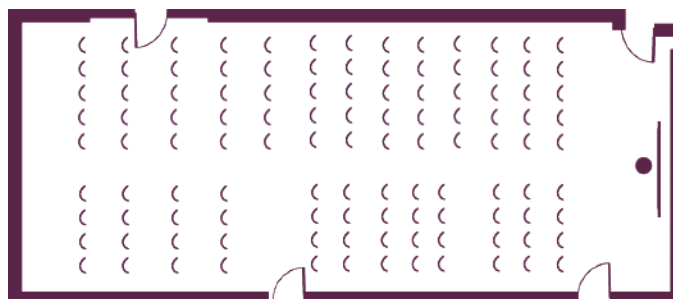
Your 28 meeting rooms

Room layouts adapted to your specific meeting requirements

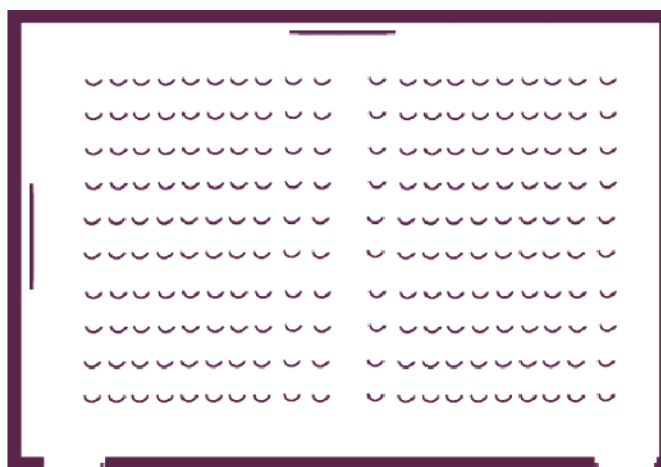
Meeting rooms	sqm	U Shape	Theatre	Cabaret	Classroom
Krickenbecker Seen and Kleiner De Wittsee	230	45	120	140	180
Bosheimer Nette and Brueggenerhuette	150	32	32	70	100
Elmpter Bach	148	44	36	65	110
Bremmersbruch	85	23	20	31	52
Nettbruch	85	23	20	31	52
Altbuchen an Harbes Hof	78	23	20	31	52
Kaelberweide	68	18	16	18	40
Rintger Bruch	68	18	16	18	40
Ferkensbruch	68	18	16	18	40
Lotzemer Bruch	68	18	16	18	40
Luesekamp and Boschbeek	58	18	12	18	30
Tantelbruch	55	16	-	16	30
Informal Raum	39	8	-	-	-
3 breakout rooms (fixed table)	35	-	-	-	-
12 breakout rooms (fixed table)	22	-	-	-	-



Bosheimer Nette
and Brueggenerhuette



Elmpter Bach



Krickenbecker Seen and Kleiner De Wittsee

Schloss Löwenstein

near Frankfurt



The home of seminars
Châteauform'

Schloss Löwenstein

A Baroque residence influenced by Versailles in the middle of the vineyards

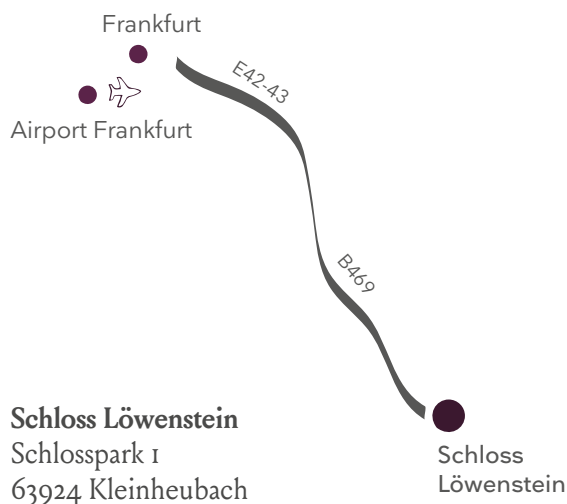
Schloss Löwenstein is located in the heart of the romantic region of Franconia, where vineyards blend harmoniously with picturesque landscapes. It was Rémy de la Fosse, the architect for the Château de Versailles, who built it in true French style in the 18th century. Friendly exchanges await at this traditional family home, where the meeting rooms are all equipped with the latest technological innovations. For relaxation, visiting the cellars in the park is a must... followed by wine-tasting course of Löwenstein's own wines...

Your house:

- 62 bedrooms
- 20 fully-equipped meeting rooms, including 1 Auditorium, 5 main meeting rooms and 13 breakout rooms

Fun and entertainment activities:

- Mountain bikes
- Volleyball
- Football
- Badminton
- Petanque
- Table tennis
- Football table
- Archery
- Hammam, sauna and hydro-massaging beds
- Fitness
- Pool table,
- Board games, card games, darts, video games, Poker
- Karaoke



40 minutes from Frankfurt Airport
50 minutes from Frankfurt (south-West)

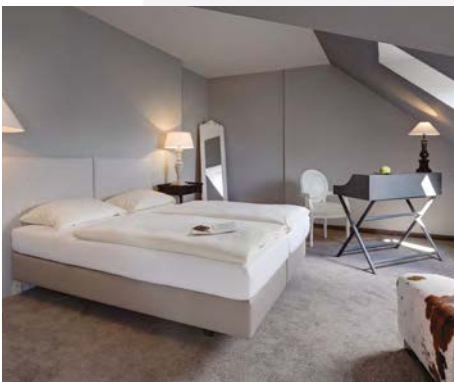
Your all-inclusive package:

Low season: **295 €** / High season: **325 €** (excl. VAT) *

**Dear customers, all-inclusive residential packages are in euros and duty-free by participant (2017 prices). All prices are subject to change, so please contact us to get more information.*

“Once again, Châteauform' contributed to the success of our yearly partner event, Belkin On Tour. Our guests were impressed by Schloss Löwenstein and the fact that we had set up an amazing Belkin stage inside. Nothing would have been possible without the flexibility and dedication of the Châteauform' team who helped us raise the standards of our partner-events.”

Belkin, Cécile Duriez



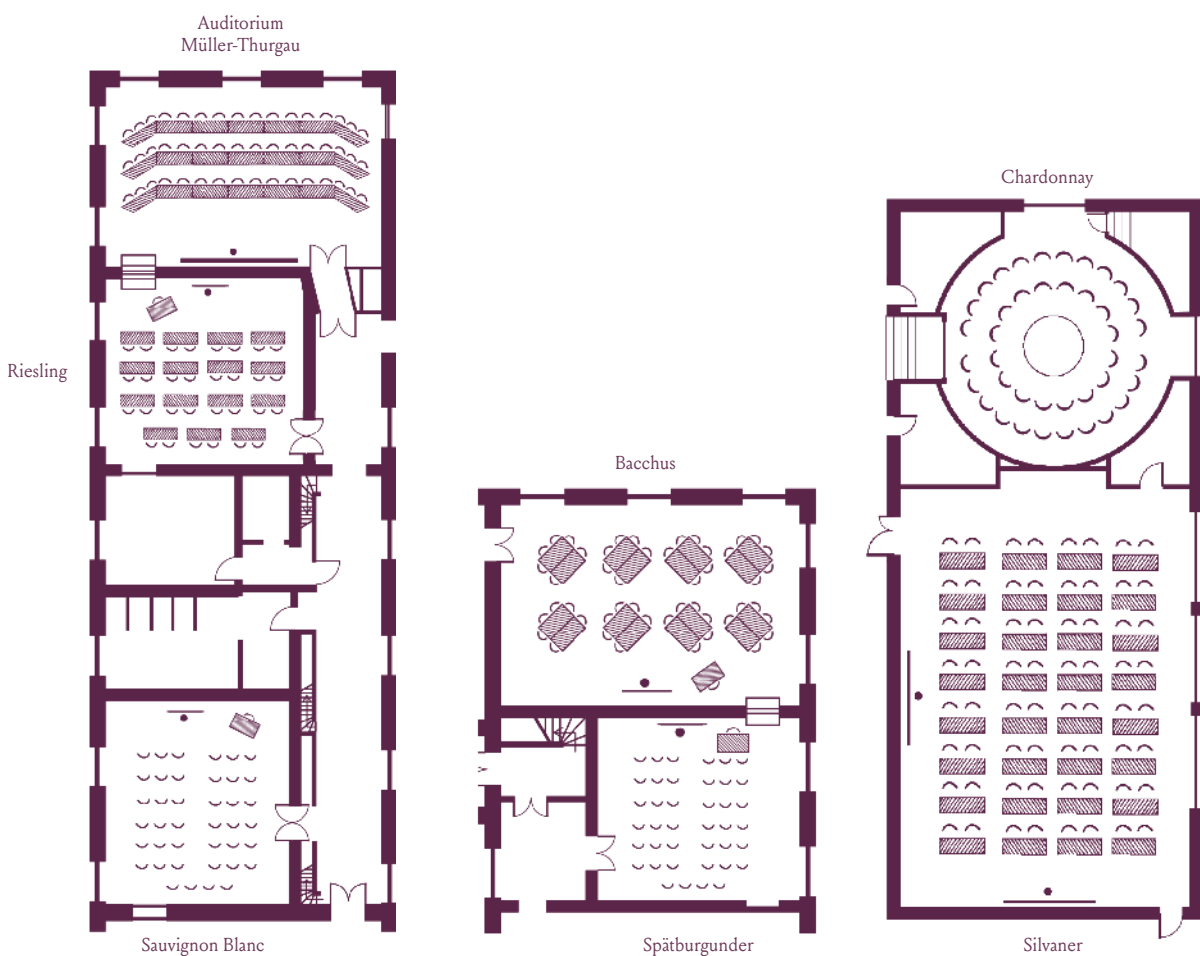
We look forward to greeting you into our new home. Schloss Löwenstein is the ideal location for encouraging team spirit and creativity, and making your seminars a great success.

Lisa & Roland, your host couple

Your 20 meeting rooms

Room layouts adapted to your specific meeting requirements

Meeting rooms	sqm	U Shape	Theatre	Cabaret	Classroom
Silvaner	176	40	60	64	120
Bacchus	96	26	30	30	60
Riesling	70	22	24	24	45
Sauvignon Blanc	70	20	24	24	40
Spätburgunder	65	20	24	24	40
Auditorium Müller-Thurgau	98	-	-	48	-
Chardonnay (Informal room)	66	40 seats	-	-	-
2 x breakout rooms	40	14	-	-	26
Breakout room	28	10	-	-	12
2 x breakout rooms (fixed table)	25	-	-	-	-
8 x breakout rooms (fixed table)	20	-	-	-	-



Schloss Reinhartshausen

near Wiesbaden/Frankfurt



The home of seminars
Châteauform'

Schloss Reinhartshausen

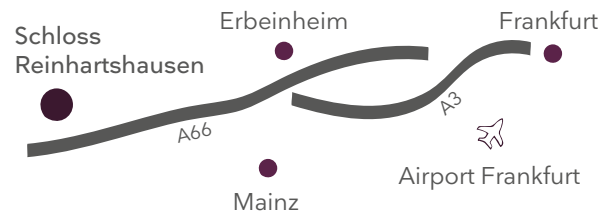
An 19th Century castle surrounded by vineyards in the Rheingau district

Surrounded by nature yet centrally located in the Wiesbaden, Mainz, Frankfurt triangle, you will find the perfect combination of professional work environment and relaxation for your participants. Our Chateauform concept in this lovely venue will ensure that your team will focus on the conference goals, and also feel at home. We take care of everything for you!



Your house:

- 60 bedrooms
- 11 fully-equipped meeting rooms for 8 to 120 participants, including 6 main meeting rooms and 5 breakout rooms



Schloss Reinhartshausen

D – 65346 Eltville am Rhein

30 minutes from Frankfurt Airport
15 minutes from Wiesbaden train station
25 minutes from Mainz train station

Your all-inclusive package:

Low season: **295 €** / High season: **325 €** (excl. VAT) *

* Dear customers, all-inclusive residential packages are in euros and duty-free by participant (2017 prices). All prices are subject to change, so please contact us to get more information.

Fun and entertainment activities:

- Swimming Pool
- Mountain bikes
- Volleyball
- Football
- Badminton
- Petanque
- Table tennis
- Football table
- Sauna
- Pool table, Board games, card games, darts, video games
- Karaoke

“From both a personal and objective point of view, I can only confirm that our collaboration with Chateauform’ has been very professional and pleasant. The concept “Like at home” was taken on very well. The ability to move freely and enjoy all the spaces and the different activities was a particular joy to everyone. We also thoroughly enjoyed meeting the chef, who delighted us with his fine cooking – and his songs!”

Beeline GmbH, Danka Ulrich



Our path has taken us from Italy to New York to Germany, where we discovered Chateauforn and embarked on this wonderful adventure. As your host couple it has been our pleasure to welcome you at La Finca El Bosque near Madrid, Château de la Princesse near Paris and Schloss Ahrenthal near Bonn, and we now invite you to discover Schloss Reinhartshausen on the Rhine, nestled in the charming cultural landscape of the Rheingau. Our team eagerly looks forward to welcoming you to this historic house and its picturesque surroundings.

Laura & Florian, your host couple

Your 11 meeting rooms

Room layouts adapted to your specific meeting requirements

Meeting rooms	sqm	U Shape	Theatre	Cabaret	Classroom
Notre Dame	168	40	60	80	120
Champs Elysées	88	24	30	40	55
Belleville	80	22	30	34	50
Montmartre	70	20	25	30	45
Jardin des Tuileries	45	12	18	20	30
La Villette	35	10	12	14	20
Bastille	33	10	12	14	20
Le Marais	24	8	-	10	15
Parc Monceau (fixed table)	65	-	-	-	-
Jardins du Luxembourg (Informal room)	45	10	-	-	-
Jardin du Palais Royal (Informal room)	34	8	-	-	-



Schloss Rothenbuch

near Frankfurt



The home of seminars
Châteauform'

Schloss Rothenbuch

A typical 14th century Bavarian house

The residence is a real haven of authenticity, in a peaceful spot crisscrossed by streams, in the middle of a village, itself nestling deep in forest. Even so, access is easy and is only 45 minutes from Frankfurt International Airport. The cozy atmosphere of the location perfectly caters for your small teams or executive committees. They can take advantage of all the spaces centered on the pretty interior courtyard, which provides a focal point for easier discussions and meeting new people – conviviality, in short.

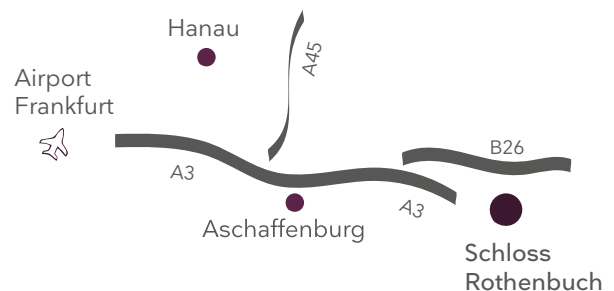


Your house:

- 40 bedrooms
- 7 fully-equipped meeting rooms for 2 to 80 participants, including 4 breakout rooms and 3 plenary rooms up to 130 sqm

Fun and entertainment activities:

- Mountain bikes
- Volleyball
- Football
- Badminton
- Petanque
- Table tennis
- Football table
- Hammam, sauna
- Pool table, Board games, card games, darts, video games
- Karaoke
- Walking and hiking



Schloss Rothenbuch
D-63860 Rothenbuch

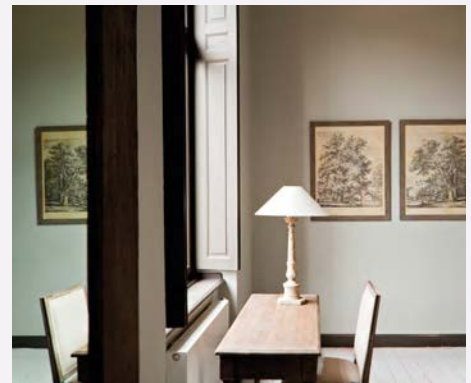
40 minutes from Frankfurt Airport
50 minutes from Frankfurt train station

Your all-inclusive package:
295 € (excl. VAT)*

** Dear customers, all-inclusive residential packages are in euros and duty-free by participant (2017 prices). All prices are subject to change, so please contact us to get more information.*

“It’s always nice to be a «guest» at the houses of seminar of Châteauform’. All the trappings are just right so that you can fully concentrate on the meeting because everything in the background is going like clockwork. When the weather is in your favour, it’s just marvellous to take your metaplan board to a quiet corner and enjoy all the opportunities outside as well. The premises as well as the ambience are just beautiful, because everything is very tastefully furnished. During the whole day you’re culinarily very good taken care of.”

UCB Pharma, Manuela Ruppenthal



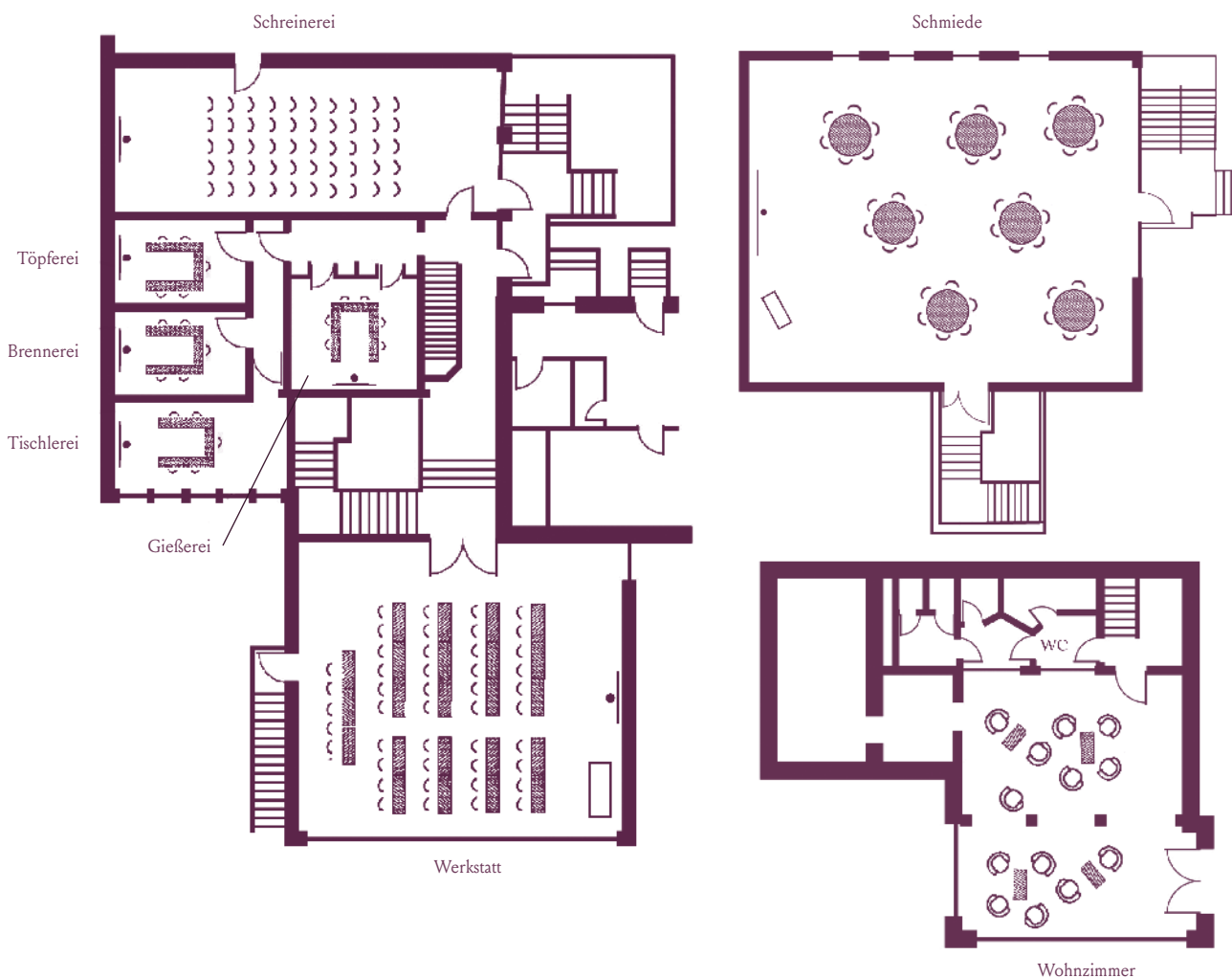
*After majestic and thousand-year-old Forteresse de Mello, we fell in love with this so welcoming former relay of hunting, nestled at the heart of the forest of Spessart, and just taken from a tale of Grimm !
For a picking of ideas and activities, one moment of conviviality in the fire corner or in the inner courtyard of the castle, come to live with us this intimate atmosphere !
In the heart of a medieval village founded 700 years ago, we are waiting for you !
Peace, Discretion, Open air, Serenity, delighted Papillae and seminars well-simmered by our great team.*

Caroline & Vincent, your host couple

Your 7 meeting rooms

Room layouts adapted to your specific meeting requirements

Meeting rooms	sqm	U Shape	Theatre	Cabaret	Classroom
Schmiede	130	30	42	50	80
Werkstatt	105	30	36	45	65
Schreinerei	65	18	24	30	50
Gießerei	18	6	-	-	-
Töpferei	15	5	-	-	-
Brennerei	15	5	-	-	-
Tischlerei	15	5	-	-	-



These companies and friends trust us

...

We thank them ...

Airbus • Accenture • Adidas • Allen & Overy
Air Liquide • Allianz • Axa • BASF • Bayer
BBDO • Bertelsmann • BMW • Boehringer-
Ingelheim • Brenntag • Capgemini • Cisco
Systems • CMS Legal Services • Coca-Cola
Commerzbank • Continental • Danone
Deloitte • Deutsche Bahn • Deutsche Bank
Deutsche Post DHL • Deutsche Telekom
Dr. Oetker • E.ON • Ernst & Young • Esprit
Essilor • European Central Bank • Evonik
Industries • Ferrero • Fiat • Fresenius
Freshfields Bruckhaus Deringer • Freudenberg
General Electric • GEA Group • Google
Hannover Rück • Henkel • Hewlett-Packard
Huawei • ING-DiBa • Johnson & Johnson
Jones Lang LaSalle • Lanxess • L'Oréal
Merck • Metro • Microsoft • Nestlé
Novartis • Opel • PepsiCo • Pfizer • PPG
Procter & Gamble • Rabobank • Rewe
Robert Bosch • Roche • RTL • RWE • SAP
Schmitz Cargobull • Siemens • Teekanne
Thyssenkrupp • Ubisoft • UCB Pharma
Unilever • Unitymedia • Vodafone • West
Pharmaceutical Services





Burg Hemmersbach near Cologne



Schloss Löwenstein near Frankfurt



Schloss Ahrenthal near Cologne/Bonn



Schloss Krickenbeck near Dusseldorf



Schloss Rothenbuch near Frankfurt



Schloss Reinhartshausen near Wiesbaden/Frankfurt

Chateauform' Deutschland GmbH
Parkstraße 22 - 50169 Kerpen-Horrem
Tel: +49 (0)2642 405 25 0
Mail: kontakt@chateauform.com

www.chateauform.com